

- () -

()

** * * *
*
**

چکیده

)

(/)

(/) (/) (/) (/) (/)

**A Study of Socio-Cultural Obstacles of Development with Emphasis on
Particularism :A Case Study in Bandarabbas City**

R. Rabbani* , N. Poorafkari* , M. Ketabi* and M. Raoofi**

***Sociology Department , the Universtiy of Isfahan**

****Ph.D. student in Sociology.**

Abstract

Development has difficult , different and many economical , social , cultural , psychological and political dimentions .For understanding of reasons and obstacles of development , all the mentioned options should be researched , but socio-cultural elements has fundamental role in development process.In this article we want to find :why in spite of enormous industrial, economical and commercial investing and several universities and high training institutions which has established in Hormozgan , this region doesnot have enough development and still classifies as a divested region?In this study we test Particularism that considered as one of the main socio-cultural obstacles of development in Bandarabbas city with modeling social-modernization theory of Parsons, Survey method, Likert-Scale, Semantic differential and Projection. Based on the results , average of Particularism in Sample statistic is (2/89), that in separation : for natives citizens is (2/88), non-native is (2/98),women is (2/86), men is (2/93),Sunnites is (2/8) and Shiites is (2/95).

Key words:Development,Social modernization, Particularism , Social interaction and Socio-cultural obstacles.

»
)
(
)«
(:
»
« »
« » -
»:
(:)«
(:) .
:

-
- 1 . Development
 - 2 . Cultural development

..... -

»

«

« - »

.

:

- « »

.

(:)

:

« »

(:)

»:

«

:

»:

»« »« »«

»« »« »«

« » « » « » « »

« » « » « »

- « »

« »:

-
- 3 . Particular
 - 4 . Modernization
 - 5 . Enkles
 - 6 . Smith
 - 7 . Lerney
 - 8 . Lipset
 - 9 . Empathy
 - 10 . Transitional personality
 - 11 . B.Moore

-
- 1. Social modernization theory
 - 2 .T.parsons

:

:

() .

:

()

:

»:

)«

(:

»:

:) .

(

-

» .

)«

(:

-

)«

« »

:« »

« »

« » « »
» « »

(:

»

:« »

»

« » «

9

/ /
/ /
(/)

».

9 . Action Theory
10 . System Theory

-
- 1 . Pattern variables
 - 2 . Toennies
 - 3 . Social structure
 - 4 . Personalily system
 - 5 . Cultural system
 - 6 . Social system
 - 7 . Universalism
 - 8 . Particularism

(:):

(:)«

:()

:	:		
:	:	()	
:	:		
:	:		

((

(:)

« »

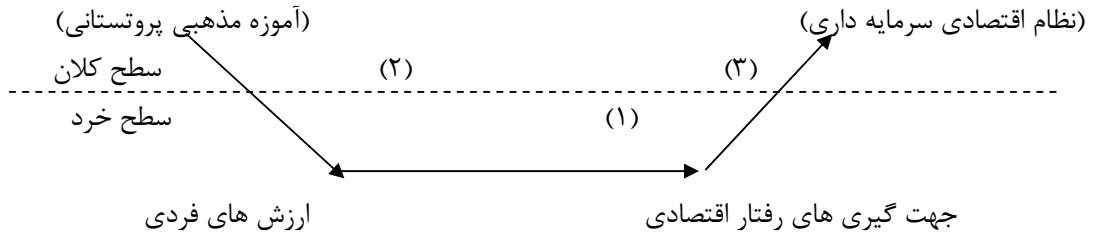
()

).

«

(

»



:()

()

() ()

« »

()

« »

OMSOO

:

(۱)

(۲)

(۳)

(۴)

()

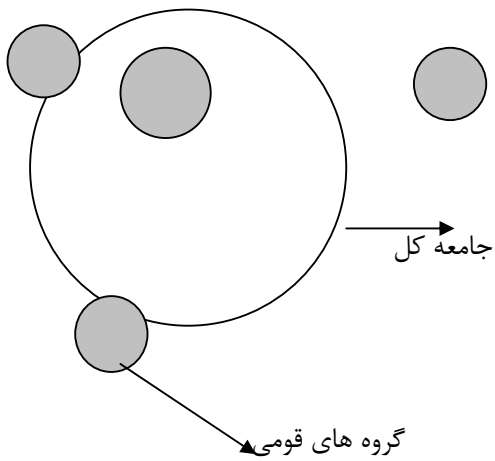
(:)

()

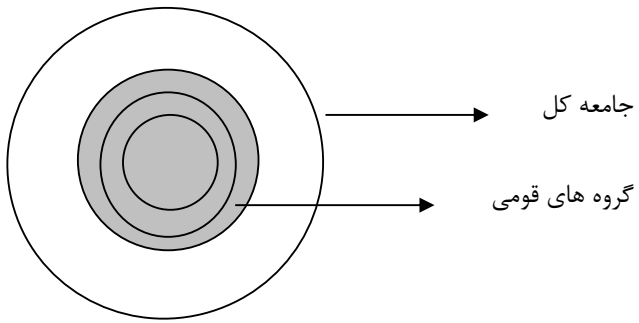
(:)

()

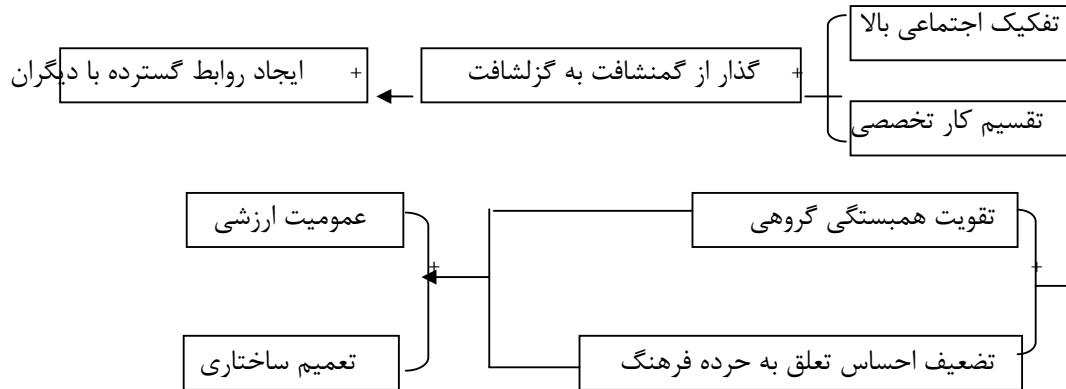
()

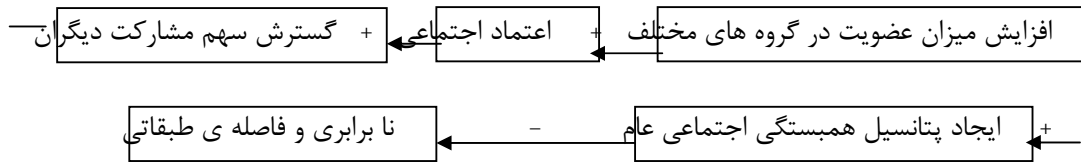


:()



: ()





:

()

(

(

(

(

(

(

) - (

(

(

)

(

(

(

:

《 》 《 》

《 》 《 》

()

)

《 》 《 》

《 》 《 》

(

()

(

:

).

(:)

:

$$n_0 = \frac{z^2 p(1-p)}{d^2} = \frac{z^2 p(1-p)}{(kp)^2} = \frac{z^2}{k^2} \times \frac{1-p}{p}$$

$$n = \frac{n_0}{1 + \frac{n_0}{N}}$$

$$n_0 = \frac{1.96^2 \cdot 0.5(1-0.5)}{0.055^2} = \frac{1.96^2 \cdot 0.5(1-0.5)}{(0.11 \times 0.5)^2} = \frac{1.96^2}{0.11^2} \times \frac{1-0.5}{0.5} = 317$$

$$n = \frac{317}{1 + \frac{317}{296 + 82}} = 317$$

«

»:

)

(:

..... -

: « » « »

« »

(/)

(/)

(/) (/) (/) :

(/)

(/)

()

)

(

(

(sig = /) R = - /)

($\bar{x} = /$)

t = /) ($\bar{x} = /$)

(sig = / :

Alpha = /

) .

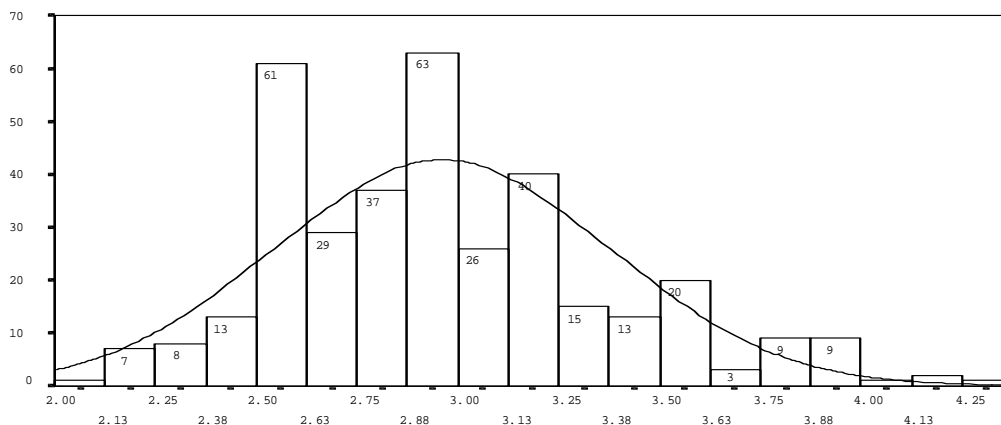
= /) /

(sig = / f = / (Prob = /)

) . ()

-
- 1 . Validity
 - 2 . Reliability

(sig = / f= /) (/)



:

:

متغیر	میانگین	انحراف معیار	سطوح طیف
تعهد تعمیم نیافته	۳,۱۷	۱,۳۳	۵ قسمتی
عواطف تعمیم نیافته	۲,۴۳	۰,۷۱	۵ قسمتی
اعتماد تعمیم نیافته	۳,۱	۰,۶۳	۵ قسمتی
تشویق غیر رسمی	۴,۳	۰,۸	۵ قسمتی
رضایت از تعامل اجتماعی	۳,۷۸	۰,۵۹	۵ قسمتی
احساس بیعدالتی توزیعی	۲,۷۶	۰,۶۷	۵ قسمتی
گستره خاص گرایی	۲,۸۹	۰,۶۲	۵ قسمتی

:

sig = / R = /)

): ()

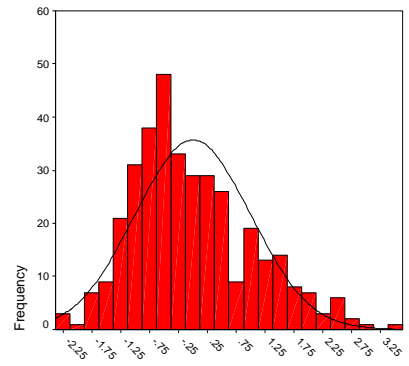
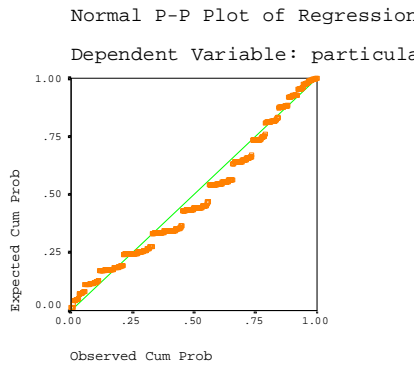
)(:) (:) (:

(Spss /) (:) (:

Beta = / R = %

..... -

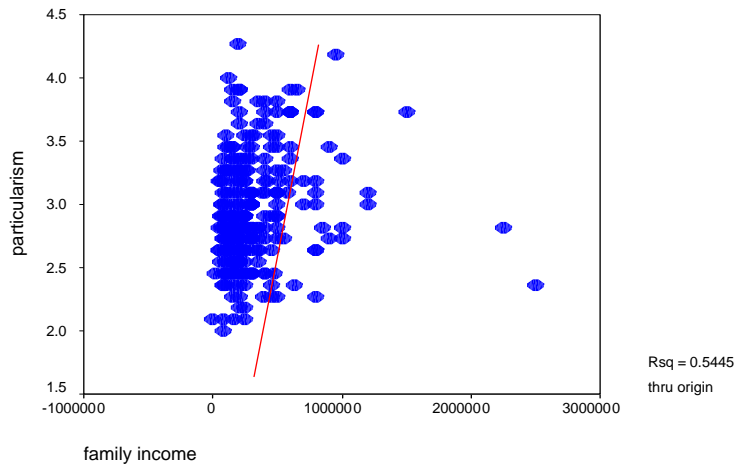
) sig = /
 / F= / R . (R
 / R
 R = /
 : R



:

(
 (sig = / R = /)
 / F= /
 Beta = / R = /
 sig = / R = - /) sig = /
 (
 / F= /
 sig = / R = /
 sig = / R = /
 Beta = / R = /
) sig = /

= / R = /
) sig = / Beta
 (F= /
 / F= /
 sig = / R = /
 sig / R = / -
 =
 Beta = / R = /
) sig = /
 (F= /
 - /
 sig = / R = /
 / R = / = / R = / sig
 sig = / Beta =
 ()
 / F= / ()
 /
 / R = /
 sig =



(f = / sig = / ,).

sig = / R = /

(f = / , sig = /)

sig = / R = /

(f = / , sig = /).

(sig = /).

$$/ R = /$$

sig =

(:

$$R = /$$

sig = /

(

(:).

Kendall's tau-

Gamma Kendall's tau-c b

(:).

(/)

.....

-

-

-

《 》

-

-

-

《 》

《 》

:

:

-

:

« »

:

:

(

»

(

(

(

:

5 . Socialization
6 . Sanction

1 . Identity
2 . Ethni city
3 . National ism
4 . Social conflict

(

(

(

-

-

-

-

-

(

:() (

:() (

(

:() (

:

(

:() (

-

17) Adelman, Irma (1965): Theories of Economic growth and development, America, Stanford University Press

: () (

18) Eisenstadt, S.N. (1985): Macro sociological Theory, ISA

:() (

19) Klain Rudolf and J.W. Berry (2001), International Attitudes in Canada: Ethno centrism. Consensual Hierarchy and Reciprocity. Available via, www.//http.google, social sciences, sociology, ethno centrism

:() . (

:

20) Kerlinger, Fred N. (1964): Foundations of Behavioral Research, Educational and Psychological Inquiry, New York University, Holt Rinehart and Winston Inc

:() (

:

21) Moore, B. (1966): Social Origins of Dictatorship and Democracy, Boston, Beacon Press

:() (

22) Parsons and Smelser (1984): Economy and Society, A Study in the Integration of Economic and Social Theory, Routledge and Kegan Paul

:() (

23) Papanek, Gustav F. (1967): Pakistan's Development: Social Goals and Private Incentives, Harvard University Press

:() (

:() (

:() (

SPSS

:() (

:

:() (

: